

Bargh afshan alborz
Amol
Mazandaran
Iran

Tel: +98 (0)1212229599

Fax: +98 (0)1213239001

Email: ba_alborz@yahoo.com

17 January 2012

WEB: www.AlborzGenerator.com

E – MAIL: ba_alborz@yahoo.com

2.7 MW Natural Gas Based Power Plant Complete set is Available for sale with us With Immediate delivery:

Engine R/hrs : 65274hrs
Make : Wartsila
Sr. No : 4000
Model : Wartsila 16V25SG
Capacity : 2.7MW
RPM : 1000
Year of make : 1998
Type of Fuel : Natural Gas

Specific Fuel Consumption:

Cylinder Configuration : 16V
Cylinder Bore : 250MM
Stroke : 300MM
Swept volume : 14.7 m³/cyl
Compression ratio : 10:5:1
Mechanical Efficiency : 65%
Engine Water Capacity : 1200
Water Inlet Temp. : 55 °C
Water Outlet Temp : 95 °C
Engine Lub Oil Capacity : 1250
Lub Oil Consumption : 0.330(Gms/Kwh)
Lub Oil Nominal Temp. : 75°C 85°C
Make : ABB INDUSTRIE
Type : AMG 630 L6
Year of make : 1998
Capacity : 3176KVA
Speed of Alternator : 1000
Voltage : 11KV
Cycles : 50Hz
Current : 166.7
P.F. : 0.85
AVR : ABB



GENERATOR MANAGEMENT MODULE (PROTECTION CUBCELL)

PLC PANEL:

MAKE: SIEMENS TYPE: S5

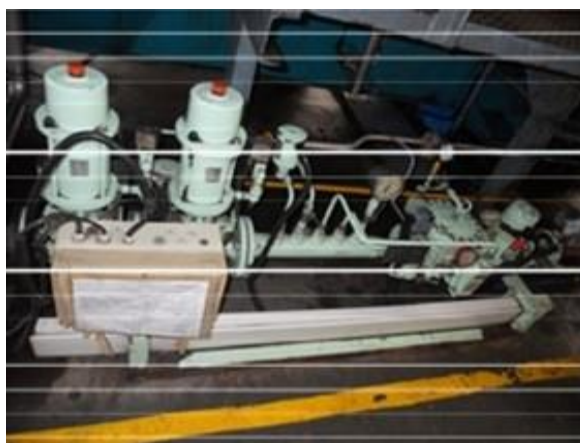


GAS REGULATING UNIT:

GAS PRESSURE: FEED LINE INLET-----0.30MPa

FUEL GAS TEMPERATURE-----0-40 °C

FUEL GAS FILTRATION -----2µm



HT TRANSFORMER

MAKE	: Kirloskar
KVA	: 5000
Volte at	: HV see table
No Load	: LV 11000
Amperes	: HV see table LV 262.4
Phases	: HV Three-Star LV Three- Delta
Transformer No	: 98SG-045/01
Specification	: IS 2026
Year of manufacture	: 1998
Impedance volts	: POSN1-: POSN5-
POSN17	
Frequency HZ	: 50
At 75 °C	: 7.23
Vector group	: ynd11
Core & winding	: 6260 kg
Oil	: 3120 kg
Total weight	: 11730 kg
Oil Litres	: 3505
Transport mass	: 11730 kg
Type of cooling	: ONAN

ON LOAD GEARS

Type	: ABS11130030917IPS
S.No	: 8675
Year of MFG	: 1998
Rated current	: 300A
Rated insulation Level	: 170KVA
Motar voltage/frequency	: 415/50
Control voltage/frequency	: 110/50
Nuber of service tapping position	: 17
Direction of power flow	: B1

O LTC 33/11kv 5 MVA transformer on load taps changer



AUXILIARY TRANSFORMER

Kva	: 500
Volts at	: HV seetable 1
No load	: LV seetable 1
Ampere	: HV seetable 1 LV seetable 1
Phases	: HV Thee delta LV Thee star
Transformer No	: 99P/1D344/6
Specification	: IS 2026
Year of manufacture	: 1999
Frequency HZ	: 50
IMPD Volts	: POSN 1 - POSN 3 - POSN 7
At 75 °C %	: 4.85
Vector group	: YND11
Type of Cooling	: ONAN
Core & Wogs	: 825 Kg
Oil	: 355Kg
Oil	: 415 Lites
Total Weight	: 1740 Kg
Transport mass	: 1740 Kg
Winding Material	: Copper



AIR COMPRESSORS

Make : Elgi Equipments Limited 2nos

	<u>COM - 1</u>	<u>COM-2</u>
Model	: HP 20250	HP 20300
MFG Year	: 4/1998 12/1998	
FAD	: 920 Ltrs / Min	31210
Motor HP	: 20 20	
Work Pr	: 25 Kg / Cm ²	30 Kg
Unit RPM	: 925 925	



PLATE - HEAT EXCHANGER

LUB OIL

Make	Swep Reheat AB	Swep Reheat AB
Type	Gx-42P	Gx-42P
Total volume	90.4 Liters	58.5 Liters
Breaking Stroke	16 bar	16 bar
Breaking temp	110°C	110°C
Max temp	110°C	110°C
Cooling	1×34 - 1×34 S/S	1×22 - 1×22 S/D

JACKET WATER



BATTERY CHARGER

Make	: Trans Electric
In out	: 230VAC ±10%
HZ	: 50
Ph	: 1
Output to Charge	: 2x55 Volts
Mace rate of charge	: 25A
S l no	: 300499



MCC PANEL

For auxiliaries



33 KV CONTROL & RELAY PANEL

11KV N G R PANEL



33KV CONTROL & RELAY PANEL, PLC PANEL,

GMM10, 24VOLTS DC SUPPLY PANEL



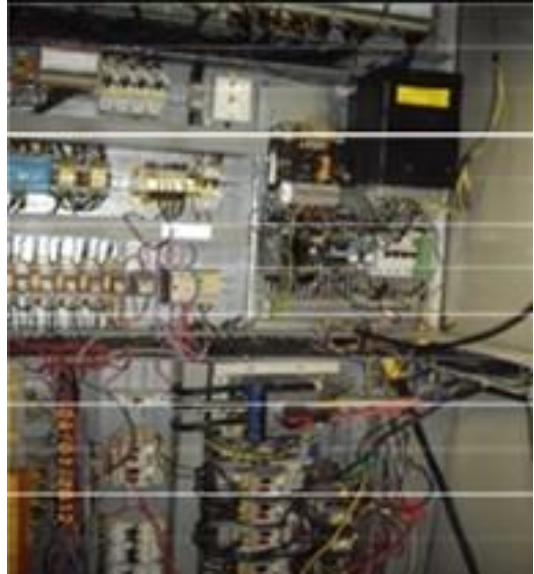
VACCUM CIRCUIT BREAKERS OF DG, 500KVA,

GRID

Rated Voltage	: 11kv
Frequency	: 50 Hz
Rated Current	: 630A
Breaking Capacity	: 25KA
Making Capacity	: 63.75KA
Short Time Current	: 25KA 3sec



Operating Sequence : 0-0.3s-co-3m-co
 OPTG Mechsm Type : BM 20
 Supply Motor AC : 230V, 50 HZ
 Supply Closing Coil : 110V DC
 Supply opening Coil : 110V DC
 Total Running vcb : 3nos
 Spare Feeder and vcb : 01nos
 Bus P.T Panel : 01



DLV& PANEL

NAME PLATE DETAILS

KVA : 3176
 VOLTAGE : 11000V
 AMPS : 167A
 RPM : 1000
 PF : 0.85
 HZ : 50
 CONNECTION : STAR
 EXC-VOLTAGE : 199V
 EXC-CURRENT : 148A



www.AlborzGenerator.com

YEAR OF MFG : 2006
BRGS : DE: SLEEVE NDE: SLEEVE
MFG : POWER PVT LTD, BANGALORE



SCOPE OF SUPPLY FOR GENERATOR:

- Complete Engine & Alternator mounted on common base frame.
- Gas Regulating unit.
- Engine Control Panel.
- H.T Panel
- Plate Heat Exchangers
- Compressors
- Air Intake System.
- 33/11kv 5 MvA Transformer.
- 11/0.433kv 200KvA Transformer
- Spare Alternator worth Rs 60.0 Lakhs
- Spare A.V.R.
- Original Wartisila Imported Emergency Spares worth Rs 25.0 Lakhs

Note : The Generator Set is in excellent condition. Trial run of the same can be arranged. Operating Log Of the engine & Records of the Engine can be shown during physical inspection.