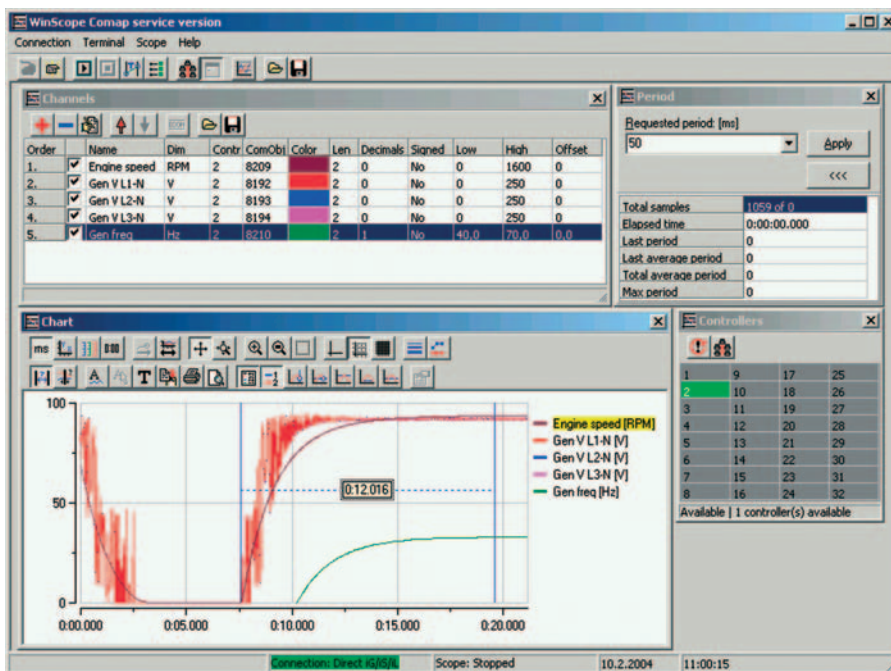


WinScope

ComAp Controllers' Monitoring Software



Description

WinScope is a high-performance PC tool to be used for monitoring and archiving trends of ComAp controllers' parameters and values.

It enables fast and convenient supervision of time behavior of quantities in controllers and therefore easy adjusting of regulator parameters as to perform optimal functionality.

WinScope provides number of graphic functions and thus gives perfect look to your data. It reaches down-to-date requirements in gen-set observation.

Features

- Compatible with Win98, WinNT, Win2000, WinXP
- Supported controllers:
 - IntelliLite®
 - IntelliGen®
 - IntelliSys®
 - IntelliDrive
 - ECON
 - INCON
- Measures and displays great number of trends from all controllers connected via IG-MU*
- Adjustable period (10-10000 ms)
- Easy choice of quantity from list
- Data and configuration storage
- Graph printing possibility
- ECON/INCON parameter setting

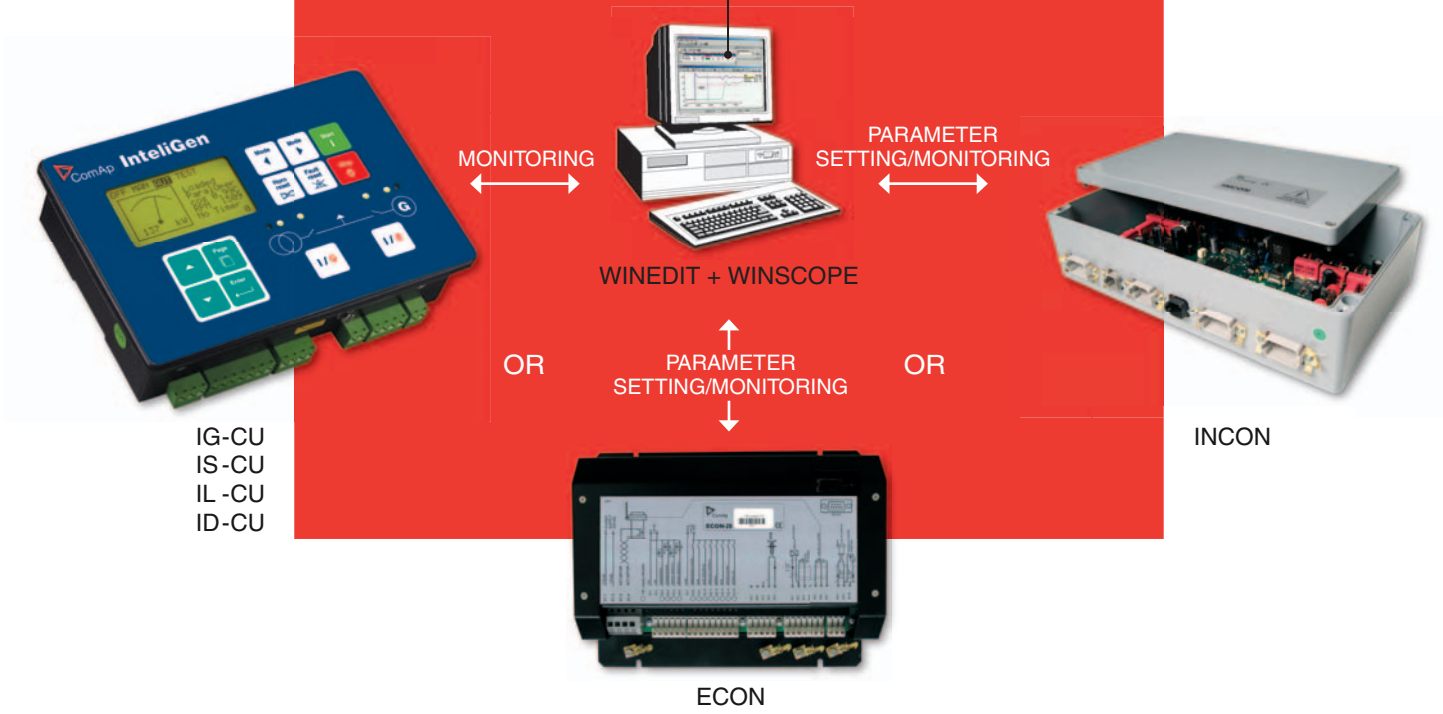
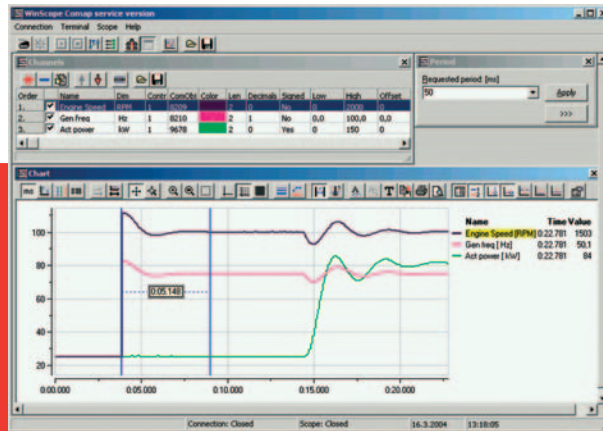
Benefits

- User-friendly environment
- Complete view of actual/historic trends in the controller
- Volume of graphic functions
- Wide range of period settings



WinScope

ComAp Controllers' Monitoring Software



Usage options

- Axes setting
- Zoom features
- Separately adjustable range and offset for each channel
- Selectable curve color and width
- Time interval and value measuring via cursors
- Maximal/minimal/average values
- Grid with selectable density
- Advanced chart settings option

* IG-MU - Modem Unit directly connected to PC with running WinScope enables to read data from ComAp controllers interconnected via CAN bus



Manufacturer:
ComAp, spol. s r.o.
 Czech Republic
 Phone: +420 266 790 611
 Fax: +420 266 316 647
 E-mail: info@comap.cz
 Internet: www.comap.cz

Local Distributor/Partner